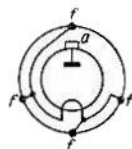
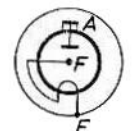


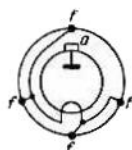
Gle 2000/1/3



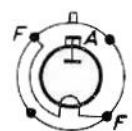
Gle 5000/02/6



Gle 5000/1/4



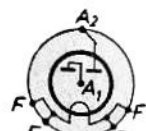
Gle 10000/02/06



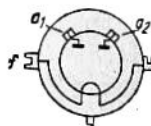
Gle 10000/1/3

Type	Verw.	U_f (V)	I_f (A)	U_{Tr} (V)
Gle 2000/1/3	EWB	5	10	700
Gle 5000/02/06 Si	EWB	2,5	5	1750
Gle 5000/1/4	EWB	5	7	1750
Gle 10000/02/06	EWB	2,5	5	3500
Gle 10000/1/3	EWB	5	4	3500
Gle 10000/1/4 Si	EWB	5	7,5	3500
Glz 30/1	ZWL	1,8	5	2 × 28
Glz 40/1,5	ZWL	1,8	6	2 × 50
Glz 40/3 Si	ZWL	2,2	12	2 × 50
Glz 40/6	ZWL	2,2	15	2 × 50
Glz 40/10	ZWL	2,8	25	2 × 50
Glz 80/1,5	ZWL	1,8	7,5	2 × 100
Glz 110/3	ZWL	2,2	12	2 × 125
Glz 110/6 Si	ZWL	2,6	18	2 × 125
Glz 110/10	ZWL	2,8	25	2 × 125
GRS 201 VFE	ZWH	5	25	2 × 2600
GVG 3010	ZW kalte Katode			2 × 300

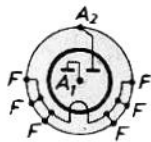
$U =$ (V)	$I =$ (mA)	U_{Sperr} (V)	I_{Spitz} (mA)	U_d (V)	I_d (mA)
600	1000	2000	3000	—	—
1500	200	5000	600	—	—
1500	1250	5000	4000	—	—
3000	200	10000	600	—	—
3000	1000	10000	3000	—	—
3100	1000	10000	4000	—	—
22	1000	135	3000	—	—
40	1500	180	4500	—	—
40	3000	180	9000	—	—
40	6000	180	18000	—	—
40	10000	180	30000	—	—
80	1500	360	—	—	—
100	3000	450	9000	—	—
100	6000	450	18000	—	—
100	10000	450	30000	—	—
2300	1600	7500	2500	—	—
300	100	—	300	—	—



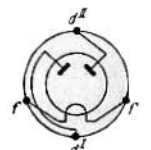
Glz 40/6



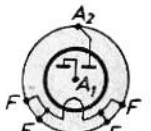
Glz 40/6



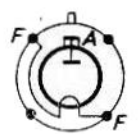
Glz 40/10



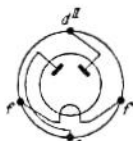
Glz 80/1,5



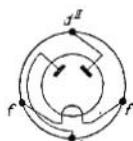
Glz 110/3



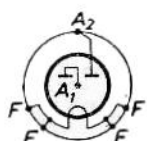
Gle 10000/1/4



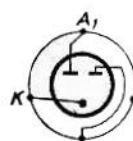
Glz 30/1



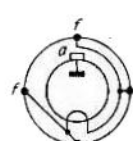
Glz 40/1,5



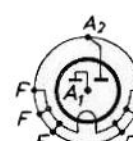
Glz 40/3



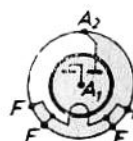
GVG 3010



GRS 201



Glz 110/10



Glz 110/6